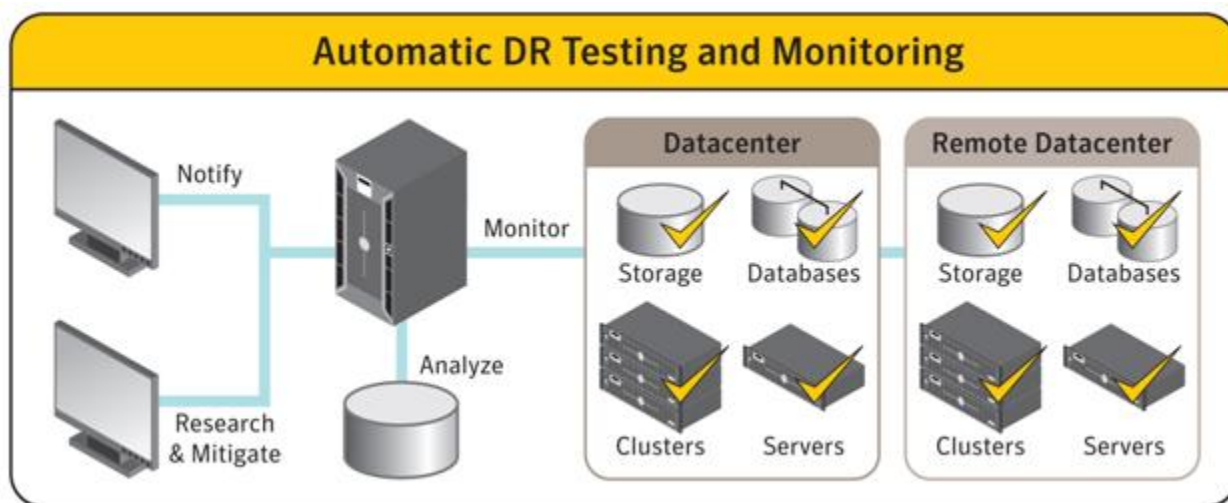


# Veritas™ Disaster Recovery Advisor from Symantec

Protect your business by automatically detecting data center vulnerabilities while validating your disaster recovery plan

A single undetected configuration error can undermine even the best-designed high availability and disaster recovery (HA/DR) environment. A disaster or data corruption event is not the ideal time to discover an issue with a HA/DR plan, and traditional DR testing is not enough to ensure business continuity. Ensure your data center's readiness with Veritas™ Disaster Recovery Advisor from Symantec.

Disaster Recovery Advisor is a comprehensive high availability and disaster recovery monitoring and analysis solution that automatically scans the data center to detect HA/DR risks and vulnerabilities. It scans storage, servers, databases, clusters, and replication infrastructures using a knowledge base containing over 4,600 risk signatures. When gaps are discovered, the software alerts the system administrator so the issues can be resolved before business operations are impacted. As an agentless solution, the implementation of Disaster Recovery Advisor is unobtrusive and non-disruptive, operating in read-only mode. Monitoring and management is simple with status dashboards that provide detailed insight into the data center's environment. The software is simple to use and easy to manage for system administrators.



Disaster Recovery Advisor automatically scans the production data center and remote replication environments for configuration gaps and data protection vulnerabilities that can impact recovery. The software analyzes the results and provides a detailed description of all detected risks, as well as suggested remediation steps.

## Key features

### Agentless and automatic scan of infrastructure

Using industry standard protocols, such as WMI, SSH, Telnet, as well as proprietary vendor APIs, Disaster Recovery Advisor collects configuration information from storage, servers and databases. Then the agentless software uses the gathered information to scan the entire data center environment. Scans can be scheduled per desired frequency. The software's automatic analysis tools and powerful Gap Detection Engine can detect vulnerabilities that include unprotected databases or database partitions, noncompliant replication configurations, data that cannot be recovered to a valid consistency point, and much more.

### Gap knowledge base

Disaster Recovery Advisor utilizes a patent-pending knowledge base containing thousands of gap signatures to scan collected infrastructure configuration information in order to detect potential risks to recoverability. The knowledge base is updated automatically whenever new signatures are created.

### Optimization opportunities

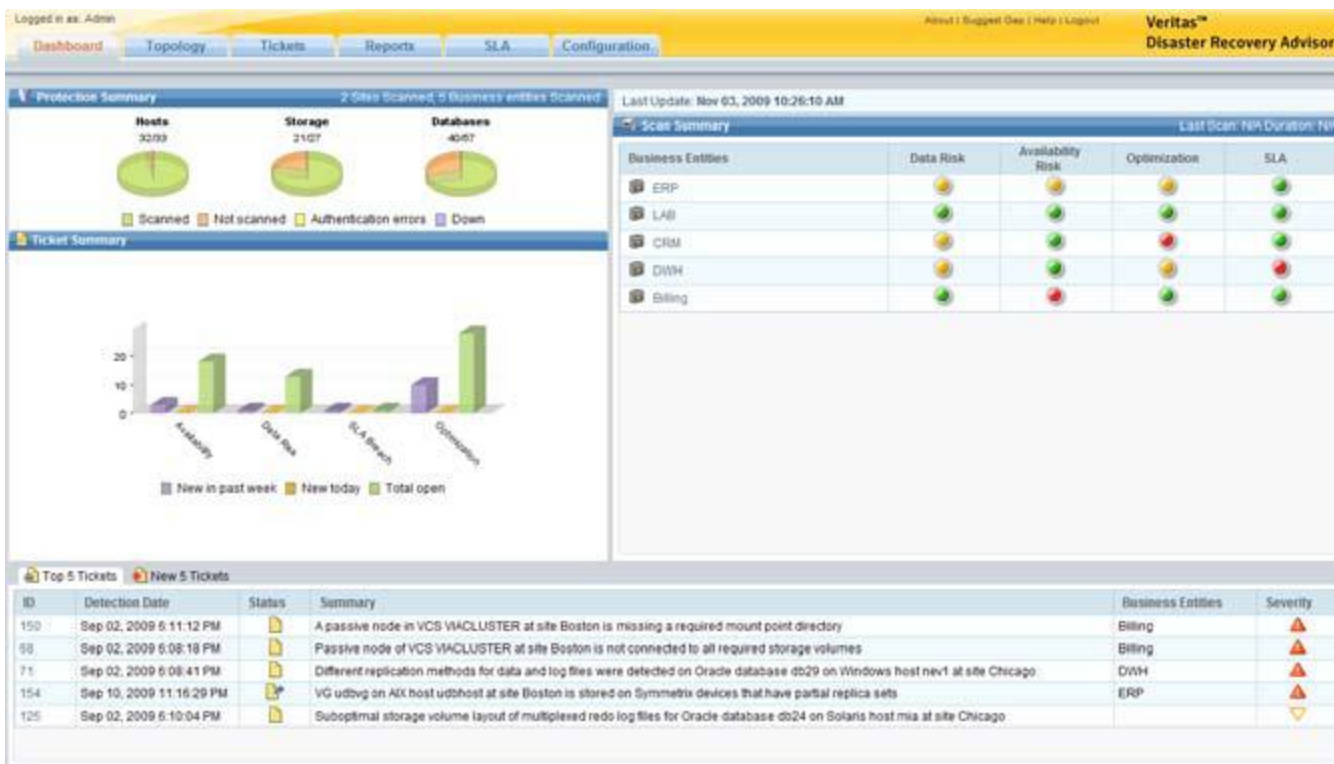
Disaster Recovery Advisor also helps improve overall system performance by highlighting unutilized storage space, old and unused copies of storage volumes, database entities and replication configuration changes that improve bandwidth performance.

### Integration with system management consoles

By integrating with existing system management frameworks (for example, IBM Tivoli® and HP OpenView®). Disaster Recovery Advisor consolidates management capabilities across the enterprise. As the software monitors the infrastructure and detects new gaps, vulnerabilities or protection SLA violations, it immediately sends notification tickets to the system management console, allowing the system operators to proactively mitigate risk before business operations are impacted.

### Enterprise scalability and performance

Designed to protect large enterprise data centers, Disaster Recovery Advisor's architecture is built on a distributed approach to allow for monitoring of multiple, geographically dispersed data centers. Agentless scanners can be deployed at any data center to work seamlessly with the Disaster Recovery Advisor enterprise server, to provide a single consolidated view of enterprise-wide DR readiness.



Disaster Recovery Advisor dashboard provides a quick summary of the current state of the environment, including actionable tickets to remediate the gaps DRA discovered. Information is refreshed every five minutes.

### **Technical requirements**

The technical requirements for Disaster Recovery Advisor are minimal.

- CPUs/cores 2 Intel/AMD (4 recommended)
  - RAM 4 GB (32-bit operating system) or 8 GB (64-bit operating system)
  - Free disk space 100 GB
  - Windows Server 2003/2008/2008R2 - Standard Edition 32 or 64-bit (Windows Server 2008 Standard Edition 64-bit recommended)
  - Oracle 10g Standard Edition installed with full database administrator rights and patch 4 (10.2.0.5.0) applied
- 

### **Environments covered by Disaster Recovery Advisor**

#### **Storage**

- EMC Symmetrix®
- EMC CLARiiON®
- Hitachi Data Systems®
- HP XP®
- NetApp®

#### **Operating systems**

- Windows® 2000 and above
- HP-UX 11® and above
- Solaris 8™ and above
- RedHat Linux® AS 3 and above
- SuSE Linux® 8 and above
- IBM AIX 4 and above

#### **Databases**

- Oracle
- MS® SQL
- Sybase®
- IBM® UDB

#### **Clusters**

- Veritas Cluster Server
- HP MC/ServiceGuard, PolyServer
- IBM HA/CMP
- Sun Cluster
- Microsoft Cluster Server
- Red Hat Cluster

## Data Sheet: Disaster Recovery

### Veritas™ Disaster Recovery Advisor from Symantec

- SuSE Cluster

#### **Replication**

- EMC TimeFinder, SRDF, MirrorView, SnapView
- NetApp SnapMirror, SnapShots, SnapVault
- Hitachi Data Systems TrueCopy, ShadowImage, UniversalReplicator, TrueShadow
- Oracle DataGuard

#### **Multi-pathing**

- Veritas DMP
- EMC PowerPath
- HP PVLlinks, HPDM
- RedHat Linux MPIO
- IBM AIX MPIO, SDD
- Hitachi Data Systems HDLM

---

#### **More Information**

##### **Visit our website**

<http://enterprise.symantec.com>

##### **To speak with a Product Specialist in the U.S.**

Call toll-free 1 (800) 745 6054

##### **To speak with a Product Specialist outside the U.S.**

For specific country offices and contact numbers, please visit our website.

#### **About Symantec**

Symantec is a global leader in providing security, storage, and systems management solutions to help consumers and organizations secure and manage their information-driven world. Our software and services protect against more risks at more points, more completely and efficiently, enabling confidence wherever information is used or stored. Headquartered in Mountain View, Calif., Symantec has operations in 40 countries. More information is available at [www.symantec.com](http://www.symantec.com).

#### **Symantec World Headquarters**

350 Ellis St.

Mountain View, CA 94043 USA

+1 (650) 527 8000

1 (800) 721 3934

[www.symantec.com](http://www.symantec.com)

Copyright © 2011 Symantec Corporation. All rights reserved. Symantec and the Symantec Logo are trademarks or registered trademarks of Symantec Corporation or its affiliates in the U.S. and other countries. Other names may be trademarks of their respective owners.

Symantec helps organizations secure and manage their information-driven world with [high availability](#), [business continuity software](#), [compliance risk management](#), and [disaster recovery](#) solutions.

20001433-3 03/11