



Altiris® 6

Total Management Suite™

.....
COMPLETE IT LIFECYCLE AUTOMATION

Altiris® Total Management Suite™ is the industry's most comprehensive suite of IT lifecycle automation solutions designed to help IT organizations manage, secure and support all IT assets, promoting effective service delivery. With Total Management Suite you can reduce operational costs, increase operational efficiencies, set the foundation for future growth, and align IT with business priorities.

BENEFITS

- > Reduce service delivery costs and increase quality of service
- > Gain visibility into and control over IT resources
- > Automate manual processes
- > Increase system security posture
- > Standardize and consolidate
- > Reduce imaging, deployment, and migration time
- > Lower total cost of owning corporate IT assets

IT LIFECYCLE AUTOMATION

The initial price of an IT asset is only a small percentage of the true cost incurred throughout the lifespan of that asset. Initial deployment, software delivering and updating, and ongoing support requirements comprise as much as 80 percent of an assets lifetime costs. Not to mention the loss of employee productivity during denial of service events.

Total Management Suite dramatically reduces costs by automating, simplifying, and integrating essential IT management functions from a single Web-based console. For example:

- > A leading international energy provider with 80,000 nodes increased inventory accuracy to 99 percent.
- > A banking company that spans all of North America and has 10,000 nodes saved \$480,000 per year in lost leased-asset returns.
- > A leading global banking and investment management firm reduced its migration costs from \$32 million to \$8 million.

Reduce consoles, costs, and complexity

Unlike most systems management vendors, Total Management Suite's integrated IT lifecycle management solutions offer compelling benefits over point products that focus on only one or two aspects of IT management. Total Management Suite beats traditional systems management by providing the most complete, easy-to-use IT lifecycle management platform that helps you improve quality of service while reducing the cost of owning and managing your IT assets.

Total Management Suite includes the best Altiris has to offer in a single suite. Altiris client and mobile, server and infrastructure, security and compliance, service and asset management solutions, and connectors that are designed to snap into a common Web-based console and repository to provide ultimate control over your IT infrastructure.

SERVICE & ASSET

Total Management Suite delivers tightly integrated service and asset management solutions on a single, extensible platform and Configuration Management Database (CMDB) to help your organization manage all types of assets and configuration items, including discoverable and non-discoverable assets, software license agreements, lease agreements, warranties, entitlements, and SLAs.

Single source of truth

Total Management Suite helps you quickly collect inventory and usage data to create asset relationships within a single asset repository and CMDB. The extensible repository manages hierarchical relationships of assets, including assets to other

Software License Summary - Adobe Photoshop 7.0				
This contract is currently assigned to Heman Smith .				
Software License Compliance				
Count of Purchased Licenses	4			
Upgrades	(0)			
Total Purchases	4			
Non-Inventoried Install Count	0			
Count of Unique Installs	6			
Total Licenses in Use / Allocated	(6)			
Compliance -2				
Software License Authorization				
	Collection	Installations	Authorized	Unauthorized
Computer	6	0	0	6
Owner	6	0	0	6
Primary User	0	0	0	0
Software License Search Rule				
Rule	Installations	Usage	Usage Previous Month	Possible Surplus
Adobe Photoshop	6	0	0	6
Contract Payments				

Use Total Management Suite to determine how your organization's assets are being used.

“Altiris has emerged from being a component-focused systems change and configuration solution towards being a more complete platform for operational management and change control. Altiris is distinctive in its approach to modeling asset information as an extension of its configuration item models within the CMDB.”

—ENTERPRISE
MANAGEMENT
ASSOCIATES

*“The CMDB Landscape
Market Directions,
Vendor Solutions and
IT Deployments”*
Dennis Drogseth
June 2005

“Altiris can now claim to provide all five functions for desktop management support: software distribution, IT asset management, remote control, PC backup, and settings and configuration management. Altiris is one of only a few vendors offering a comprehensive client management suite solution.”

—FRED BROUSSARD
Senior Analyst and PC Device
Management Software
IDC

configuration items, users, locations, departments, cost centers, and associated contracts. The 360-degree view of asset relationships helps reduce the risk associated with change, empowers the service desk to quickly resolve incidents, creates a baseline for security audits, enforces corporate standards, and provides the foundation for all change and configuration management activities, including PC personality and OS migration, deployment and provisioning, software packaging, application distribution, and patch management.

Software license management saves money

If you want to avoid paying for software you are not using, then you must first identify what you have. Save money and get the most out of your software investments by using Total Management Suite to:

- Identify software usage patterns so you don't over- or under-purchase
- Reallocate and retire unused licenses
- Reduce support costs by standardizing application versions
- Eliminate costly penalties or fees by automatically aligning license counts to software license agreements

Don't just track—execute

Altiris has revolutionized the service and asset management environment by providing technicians with context-aware integration to incident and problem resolution and change execution tools without leaving a record. A single repository and embedded knowledge management reduce resolution time and knowledge capture. Total Management Suite brings the IT organization closer to employees by allowing them to research knowledge base articles for resolutions to their own issues, as well as provide service request and incident logging within an employee self-help portal. The comprehensive suite supports and extends ITIL Service Support and Service Delivery processes.

CLIENT & MOBILE

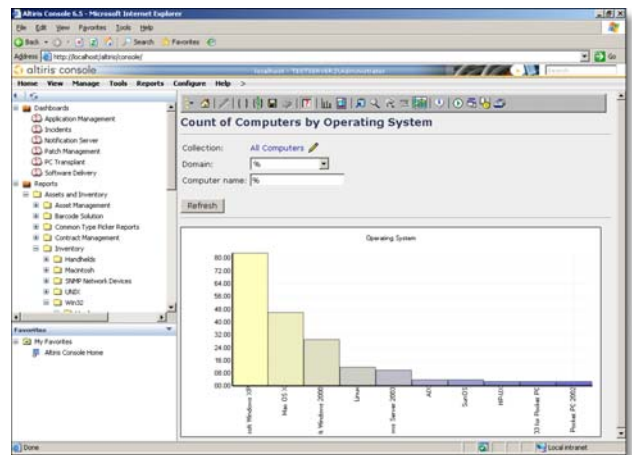
Total Management Suite provides an easy-to-use systems management solution that reduces the total cost of ownership for desktops, notebooks, and handheld devices. Developed for IT professionals who manage computing devices on a regular basis, the suite enables administrators to deploy, manage, and troubleshoot systems from virtually anywhere.

Simplified and lower-cost management

IT departments are faced with a challenging task: daily management of numerous, constantly-changing client and mobile computers. Altiris addresses these demanding challenges with comprehensive solutions that help you optimize and control your environment, and reduce the cost of management.

Comprehensive control

Take control of your computing environment with Total Management Suite. Deploy, manage, migrate,



Altiris Web Reports provide comprehensive information about your IT environment.

and troubleshoot clients within your environment from a single Web-based management console.

- Secure management with role-and-scope-based security
- Zero-touch OS deployment and migration
- Integrated hardware and software inventory with Web-based reporting
- Automated patch management
- Policy-based software management

Extend management to mobile devices

The challenge, from an IT perspective, is to manage a mobile work force, provide the necessary access to critical enterprise resources, and maintain levels of security, support, and software integrity. Building on mobile computer management strengths, Altiris addresses important management functions for the mobile notebook and handheld devices, including Pocket PC*, Palm*, and RIM* platforms.

SERVER & INFRASTRUCTURE

With the evolution of server hardware and the advent of blade computing, organizations must respond more quickly to rapidly changing business requirements. Total Management Suite reduces the complexity of operating your servers by providing comprehensive management that includes automated deployment, patch management, desired-state management, and recovery for servers, including the network fabric.

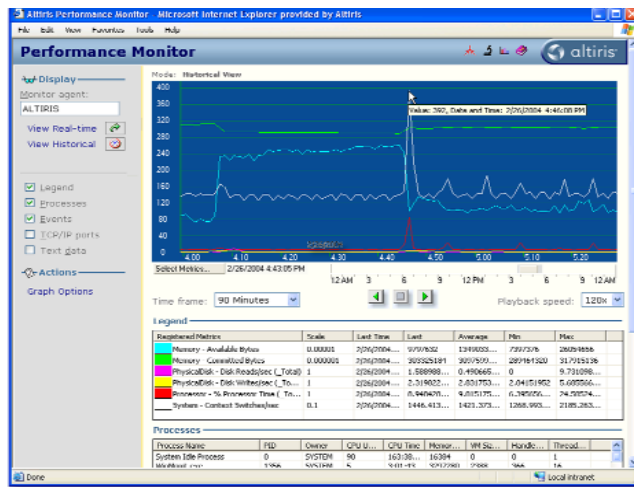
Leverage what you have

HP created the HP ProLiant® Essentials Rapid Deployment Pack, which integrates the HP SmartStart® Scripting Toolkit with Altiris Deployment Server™ to provide a complete and automated solution to deploy HP ProLiant servers.

- > Automate time-consuming tasks
- > Reduce human error
- > Minimize server downtime

“Server Management Suite [included in Total Management Suite] offers a complete and powerful deployment environment with inventory, patch management, software delivery, remote control, monitoring, and app management capabilities. Managers willing to invest in the initial cost and configuration time should recover expenses rapidly.”

—INFOWORLD
Nov. 26, 2003



Use the Performance Monitor Console to gather comprehensive system data so you can isolate issues.

ALTIRIS CONNECTORS

Altiris Connector Solution™, included with Total Management Suite, integrates Altiris solutions with your organization's third-party systems. Use Connector Solution to leverage user and organizational data from your HR system, cost information from your financial system, and other pertinent data from your critical business systems.

TOTAL MANAGEMENT SUITE CAN HELP YOU

Total Management Suite can reduce the cost and complexity of owning and managing your IT assets, and help you get there as painlessly as possible.

The suite combines the best solutions

Altiris has to offer into a single suite with a great price to match, helping you to automate your IT lifecycle management processes, including client and mobile, server and infrastructure, service and asset, and security and compliance management.

Included in Total Management Suite

Service & Asset Management Suite™ combines enterprise service and asset management disciplines into a single, unified CMDB and asset repository, helping you determine asset TCO and achieve the highest level of service.

Client Management Suite™ enables administrators to deploy, manage, and troubleshoot systems from virtually anywhere.

Server Management Suite™ provides a comprehensive solution for managing business-critical servers and operations in your environment.

Increase speed and reliability

Altiris solutions increase the speed and reliability of management to improve availability, business continuity, and staff efficiency and increase cost savings by providing these capabilities:

- > Deployment—Bare-metal OS, network, and application stack imaging for rapid installation
- > Patch—Centrally-controlled hardware, OS, and third-party application security patch management
- > Desired state—Automated application self-healing and configuration settings management
- > Recovery—Integrated server snapshot prior to configuration management
- > Monitoring—Improving operations and enhancing performance

“According to Forrester Research, the top three threats to organizations are viruses and worms, employees acting in unauthorized ways, and failure to comply with regulations.”

—FORRESTER RESEARCH
(Survey of 188 technology decision makers)
January 2005

“With market consolidation as a driving force in the technology provider selection process, customers are leaning toward a suite-based approach. However, many IT organizations continue to purchase best-of-breed products to fill ‘gaps’ in management suites.”

—GARTNER DATAQUEST
 “Market Share:
 Enterprise Management,
 Worldwide 2004”
 Laurie Wurster
 June 2005

“[Total Management Suite] will provide some impressive network control and management capabilities, and you’ll spend far less of your time putting out fires.”

—REDMONDMAG.COM
 March 2005

These integrated, stand-alone solutions are included with Total Management Suite:

- > Application Management Solution™
- > Application Metering Solution™
- > Asset Control Solution™
- > Barcode Solution™
- > Carbon Copy® Solution
- > Connector Solution™
- > Contract Management Solution™
- > Deployment Solution™
- > Helpdesk Solution™
- > Inventory Solution®
- > Patch Management Solution™
- > Real-Time System Manager Solution™
- > Recovery Solution™
- > Software Delivery Solution™
- > Software Virtualization Solution™
- > Wise Package Studio®

Also available as an add-on to Total Management Suite is SecurityExpressions™ for security configuration policy compliance. The solution is the easiest-to-use and most scalable agentless and agent-based solution available for deploying and managing enterprise system security policies.

SYSTEM REQUIREMENTS

Total Management Suite requires that you install and configure the Altiris Notification Server™.

Notification Server Minimum Requirements

- > Processor—Pentium® III 800 MHz or faster
- > Memory—1 GB RAM
- > Hard drive—20 GB
- > Operating system—Windows® Server 2003 or Windows 2000 Server
- > Database—Microsoft® SQL Server 2000 SP3
- > Browser—Microsoft Internet Explorer 6 or later

Altiris Agent Minimum Requirements

- > Operating system—Windows 95 or later
- > Available disk space—5 MB disk space for Altiris Agent, plus space to install required software
- > Memory—64 MB RAM
- > Browser—Microsoft Internet Explorer 4 or later

For a complete list of Total Management Suite’s system requirements, contact Altiris.

TRY TOTAL MANAGEMENT SUITE FOR FREE!

Download your free 30-day evaluation version of Total Management Suite at www.altiris.com/eval.

Copyright © 2006, Altiris, Inc. All rights reserved. Except as provided in Altiris’ license agreement governing Altiris Total Management Suite, Altiris assumes no liability whatsoever, and disclaims any express or implied warranties relating to the use of this product, including without limitation, warranties of fitness for a particular purpose, merchantability, or infringement of any third-party intellectual property rights. Altiris may have patents or pending patent applications, trademarks, copyrights, or other intellectual property rights that relate to this product. The furnishing of this document and other materials and information does not provide any license, express or implied, by estoppel or otherwise, to any foregoing intellectual property rights. *Other company names or products mentioned are or may be trademarks of their respective owners.

