



Wise Installation Studio

ADVANCED INSTALLATION AUTHORIZING FOR WINDOWS INSTALLER AND WISESCRIPT

BENEFITS

- > Quickly create .MSI or WiseScript installations for Windows platforms
- > Author desktop, mobile device, Web, or server-based installations
- > Supports the latest technologies, including virtual applications and Microsoft Windows Vista

Wise Installation Studio combines the best of Wise and Altiris technologies to support advanced installation authoring in either Windows* Installer (.MSI) or WiseScript formats. With exclusive features for development teams of any size, Wise Installation Studio helps you create high-quality installations for complex environments.

FAST AND FLEXIBLE

It's your choice: You can create an installation using the technology that best fits your requirements: Windows Installer or WiseScript. Build either a fully-functional .MSI or WiseScript installation with a few mouse clicks. The complexities of Windows Installer are simplified and incorporated into the intuitive interface, so you can easily build an installation without understanding the complicated inner workings of Windows Installer. And WiseScript has been used in thousands of setup.exe installations with reliable results.

If you develop in Microsoft Visual Studio* .NET, you can automatically create and update your installation from your project files. Spend your time coding instead of wrestling with installations, improve overall quality, and deliver software to your end users faster.

CUTTING EDGE

You don't have to worry about creating installations that support new technologies. Altiris works closely with Microsoft to integrate the latest technologies into Wise products, such as Microsoft Windows Vista, the Microsoft .NET Framework, 64-bit support, XML Web services, no-touch deployment, and more. If you're developing applications for the .NET Framework, you can work directly in Visual Studio .NET or author in a standalone environment.

VIRTUAL APPLICATIONS

You can use Wise Installation Studio to create installations that enable your applications to run in a virtualized state when used in conjunction with the Altiris Software Virtualization Solution. Virtualized applications execute in their own virtual space, without impacting other applications or the base operating system. Virtualizing applications dramatically reduces the chance of applications conflicts and, in turn, will significantly reduce customer support calls.

The virtualization technology in Wise Installation Studio also enables you to install an application into a virtual layer for testing purposes. The advantage of this approach is that no changes are committed to your computer. Once testing is complete, you can turn off the virtual layer and all testing changes are thrown away.

TRIALWARE SUPPORT

Wise Installation Studio is integrated with one of the leading trialware products, PRO-Tector* from Nalpeiron. PRO-Tector allows you to electronically generate, track and enforce software licenses and protect against unauthorized use by implementing a range of patent-pending product activation and software copy protection options. Choose from full, Try-Before-You-Buy or Try-Before-You-Die support for metered or time-based trials.

Each copy of Wise Installation Studio includes a link to download a free copy of Nalpeiron PRO-Tector Standard (\$799 value), which allows you to trialware-enable a single product. Additional options are hosted activation service and many other types of licensing schemes. The PRO-Tector Professional version offers floating network licensing, leasing and selling software as a service. For more information, visit www.nalpeiron.com/altiris.

DATA-DRIVEN WEB APPLICATIONS

Why spend valuable time manually configuring the installation, writing custom code or producing lengthy documentation for the Web administrator? Move your Web applications from development to the production environment with a completely seamless, automated process. Wise Installation Studio is specifically designed to automate time-consuming tasks previously required for configuring Web-based applications.

- > Customize the installation to prompt the administrator for variables that configure the application during installation

- > Create multiple websites from one installation, including new root websites and creating and configuring Virtual Directories
- > Install multiple instances of a website, such as Web farms, from one installation

SERVER INSTALLATIONS

Wise Installation Studio includes comprehensive support for creating server-based application installations. The tedious tasks associated with server installations are no longer required. You can create a fully functional server installation in minutes, as easily as a traditional desktop installation.

- > Add and manage users
- > Connect to and configure Microsoft SQL Server by running SQL Server scripts you create, or use your development database as a model and let Wise Installation Studio create the scripts

- > Take advantage of advanced features for configuring and deploying data-driven Web applications and Web services

MOBILE DEVICES

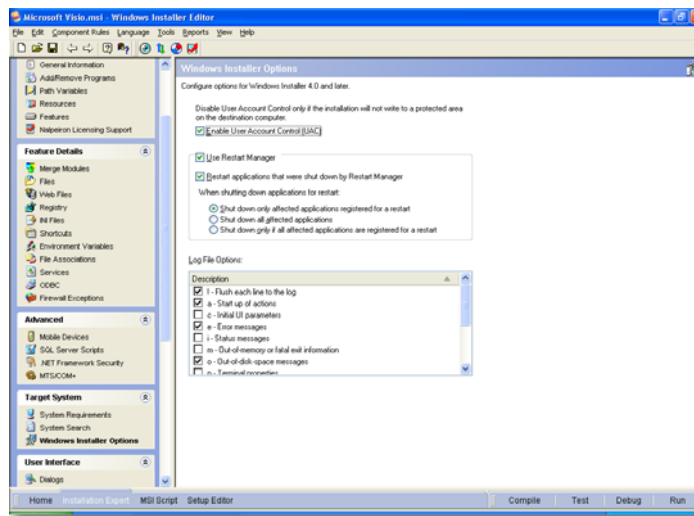
Applications for mobile devices are increasingly common, and Wise Installation Studio makes installing mobile applications simple. Files are packaged into a specific CAB format and the destination computer's processor is specified before the CAB is built.

LOOKING FOR ANOTHER OPTION? CHECK OUT WISE INSTALLATION EXPRESS

If you need a basic installation tool that only supports authoring installations for Windows Installer, check out Wise Installation Express. Download a free, 30-day evaluation version from <http://evaluations.wise.com>.

INSTALLER PRODUCT COMPARISON	WISE INSTALLATION STUDIO	WISE INSTALLATION EXPRESS
Author installations in .MSI format	✓	✓
Author installations in WiseScript format	✓	
Author virtual installations	✓	
Microsoft Vista support	✓	✓
Author 64-bit installations	✓	✓
Support for Nalpeiron PRO-Tector trialware	✓	
Mobile device support	✓	
Configure SQL Server	✓	✓
Web application support	✓	

TRY WISE INSTALLATION STUDIO FREE FOR 30 DAYS!
 Download a free 30-day evaluation version of Wise Installation Studio at <http://evaluations.wise.com>.



Wise Installation Studio offers support for Microsoft Windows Vista, including the ability to minimize reboots using Vista's Restart Manager Infrastructure.

Copyright © 2006, Altiris, Inc. All rights reserved. Except as provided in Altiris' license agreement governing Wise Installation Studio, Altiris assumes no liability whatsoever, and disclaims any express or implied warranties relating to the use of this product, including without limitation, warranties of fitness for a particular purpose, merchantability, or infringement of any third-party intellectual property rights. Altiris may have patents or pending patent applications, trademarks, copyrights, or other intellectual property rights that relate to this product. The furnishing of this document and other materials and information does not provide any license, express or implied, by estoppel or otherwise, to any foregoing intellectual property rights. ®Other brands and names are the property of their respective owners.