

Symantec™ Control Compliance Suite

Automated management of deviations from security configuration standards

Overview

The growth and acceleration of new vulnerabilities, along with the increasing complexity of business-critical infrastructures, makes achieving compliance a continuing challenge that can divert substantial resources from an organization's primary business mission. Recent research by a major analyst firm indicates that compliance with multiple regulations will claim as much as 15 percent of IT budgets in 2006. The research points out that companies that have invested in one-off solutions for each regulatory challenge they face will spend 10 times more on IT solutions for compliance than those organizations that develop a single solution to manage multiple regulatory requirements.

Symantec Control Compliance Suite applies advanced, cost-effective technology and delivers automation to help implement, measure and maintain compliance with security configuration standards. Control Compliance Suite provides precise reports about where your organization does-or does not-comply with internal technical standards, as well as ad hoc querying capability and entitlement reporting. Equally as important, Control Compliance Suite outlines specific steps for addressing non-compliant servers or workstations anywhere in the world.

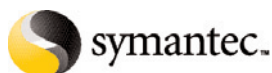
Features and benefits

Establishes baseline configurations for all major operating systems

- Creates a custom technical standard or builds a reference template from pre-existing internal standards
- Exports technical standards for archive or business continuity purposes
- Establishes technical standards based on the following Technical Standard Packs for operating systems and applications: Windows®, UNIX®, Linux®, NetWare®, SQL Server, Oracle®, and Exchange

Measures and monitors configuration standards to quickly identify deviations, non-compliant systems

- Automates measurement of compliance with technical standards using pass/fail scoring that saves hours of manual identification and analysis
- Sends by email a link to compliance results that can be viewed anywhere in your environment using Microsoft Internet Explorer
- Provides trending based on logical, hierarchical groupings along with drill-down details on non-compliant systems for quick remediation, reducing the risk of non-compliance, security breaches and business disruption
- Creates comprehensive lists by issue, such as assessing required patches through integration with Shavlik® patch database



Data Sheet: Compliance Management Solution Symantec™ Control Compliance Suite



The Symantec Control Compliance Suite interface helps to visually review and assess compliance across multiple platforms in complex IT server environments.

Tracks compliance to IT controls related to important regulations and frameworks

- Provides an efficient means to assess compliance to control systems based on custom mappings between technical standards and frameworks and regulations
- Displays pass/fail scores against industry regulations and governance frameworks based on technical check assessments
- Supplies regulatory content for Sarbanes-Oxley, FISMA, HIPAA, GLBA, Basel II, and Framework content for ISO 17799, COBIT, and NIST SP800-53

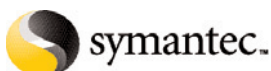
Assures comprehensive, immediate closed-loop remediation to minimize vulnerabilities

- Automates change management for organizations using Remedy® or HP® Service Desk with the ability to assure auditors that corrective actions are complete and accurate

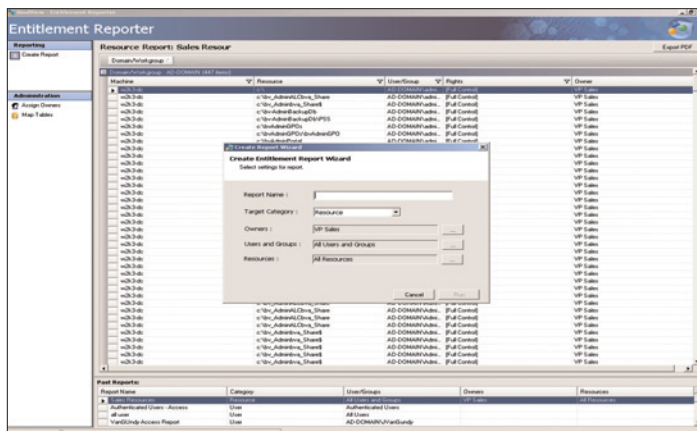
- Enables immediate corrective action for more than 800 different configuration fields
- Automatically opens incidents in Remedy or HP Service Desk through an integrated interface, based on a compliance evaluation
- Reports on all incidents opened by Control Compliance Suite, including a view of notes and status
- Verifies that all tickets are "fixed" or "closed," and the tasks required have been performed correctly
- Implements a closed-loop remediation process through integration with Remedy or HP Service Desk

Enables detailed Entitlement Reporting that shows effective permissions across the enterprise

- Provides an intuitive interface for displaying and sorting through advanced permissions reports that incorporate direct and indirect permissions
- Supplies highly granular, detailed entitlement reports that show who has access to specific information, what each individual has access to, and who the business owner is for the data
- Produces "Evidence of Review" reporting to facilitate management review of access controls as mandated by SOX and other regulations to prove that privilege grants conform to access needs



Data Sheet: Compliance Management Solution Symantec™ Control Compliance Suite



Symantec Control Compliance Suite allows you to gather direct and inherited permission data for users and groups through its Entitlement Reporter interface, and generate reports that clearly illustrate the level of access to information for each user

Customizes compliance reports using custom-defined collections and ad hoc queries

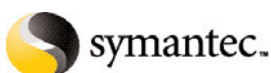
- Provides customer definable ad hoc queries across multiple platforms in highly complex and heterogeneous environments
- Delivers query flexibility and granular control down to individual machine level
- Narrows and targets the scope for evaluating configurations in large enterprise environments, allowing the selection of specific servers or groups of servers to be evaluated
- Filters objects selected for evaluation using the target collection builder
- Imports lists of servers to be evaluated in a convenient collection or report set

Integrates with Symantec Bindview Policy Manager to provide proof of security configuration compliance with broader corporate policy

- Provides a single compliance architecture for managing multiple regulations, by integrating with Symantec Bindview Policy Manager
- Lowers the cost of compliance by automating the assessment of IT policies against industry regulations and best practices

Endorsements

- Best Policy Monitor: 2004 Network Computing Well-Connect Awards
- Best Policy Management Solution: 2004 SC Magazine Global Awards
- 2003 Network Computing Editor's Choice Award
- IDC White Paper: "Optimizing Your IT Controls Environment for Compliance with Multiple Regulations," by Charles Kolodgy, December 2005



Technical specifications

Symantec™ Control Compliance Suite

Components

- Microsoft SQL Server 2000
- Microsoft .NET Framework 1.1

Systems Requirements

As appropriate:

- bv-Control® for Windows®
- bv-Control® for UNIX®
- bv-Control® for NetWare®
- bv-Control® for Microsoft® SQL Server
- bv-Control® for Oracle®
- bv-Control® for Exchange

More information

Visit our Web site

<http://enterprisesecurity.symantec.com>

To speak with a Product Specialist in the U.S.

Call toll-free (800) 745-6054

To speak with a Product Specialist outside the U.S.

Symantec has operations in 40 countries. For specific country offices and contact numbers, please visit our Web site.

About Symantec

Symantec is the world leader in information security providing a broad range of software, appliances and services designed to help individuals, small and mid-sized businesses, and large enterprises secure and manage their IT infrastructure. Symantec's Norton™ brand of products is the worldwide leader in consumer security and problem-solving solutions providing solutions to help individuals and enterprises assure the security, availability, and integrity of their information. Headquartered in Cupertino, California, Symantec has operations in 40 countries. More information is available at www.symantec.com.

Symantec Corporation World Headquarters

20330 Stevens Creek Blvd.

Cupertino, CA 95014 USA

(408) 517-8000

(800) 721-3934

www.symantec.com

