

MICROSOFT WINDOWS SERVER 2008 PROTECTION CHALLENGES

Microsoft Windows Server 2008 is the next generation of the Windows Server operating system from Microsoft that helps information technology (IT) professionals maximize control over their infrastructure by providing new availability, virtualization, security, and management capabilities. Windows Server 2008 can help IT administrators provide a significantly more robust Windows server environment than ever before to their customers.

While the benefits of Windows Server 2008 are clear, Windows administrator's who are deploying or planning on deploying Windows Server 2008 into their environments need to understand the new technologies included in this next generation operating system. These technologies present new challenges for protecting and quickly recovering systems. These include:

- How to protect new Windows Server 2008 systems along with existing Windows 2003 and 2000 systems with a single data protection solution?
- How to protect and recover new Windows Server 2008 Transaction NTFS file systems?
- How to automatically protect open in-use files on Windows Server 2008 systems?
- How to protect and recover Windows Server 2008 System State and Active Directory Domain Controllers?
- How to automate the disaster recovery of entire Windows Server 2008 systems, including **Server Core** systems?
- How to protect Microsoft Virtual Machines while they are online and running?

Key Business Benefits

- Complete **Microsoft Certified** protection of the Windows Server 2008 Family (including 32-bit and x64 versions)
- Support for Windows 2008 **Server Core**
- Complete integration with Microsoft VSS writers for System State and Active Directory Protection
- Included Open File Protection and Automated Disaster

SETTING THE STANDARD IN WINDOWS SERVER 2008 PROTECTION

Backup Exec has provided "*The Gold Standard*" for complete backup and recovery of Microsoft operating systems and applications for over 15 years in direct partnership with Microsoft. As new applications and operating systems are released by Microsoft, Backup Exec has consistently delivered immediate and complete data protection for each new offering and the new technologies they introduce.

Symantec Backup Exec 12 for Windows Servers continues this commitment and introduces complete protection for Microsoft's latest OS, Microsoft Windows Server 2008.

Backup Exec 12 is Microsoft Server 2008-certified and leverages the new capabilities and technologies of Windows Server 2008 to provide complete protection of Windows Server 2008 components including:

- **New** Complete Windows 2008 support
- **New** Windows Server 2008 Transactional NTFS file system protection
- **New** Included Complete Open File Support via Microsoft VSS
- **New** Windows Server 2008 System State and Active Directory protection
- **New** Included automated basic system recovery of Windows Server 2008 systems, including BitLocker encrypted volumes
- **New** Microsoft Virtual Server Virtual Machine online protection via Microsoft VSS
- **New** Complete support of Microsoft Server 2008 Clusters and Cluster Database

all from a **single data protection solution** that supports your entire Windows infrastructure from Windows 2000 through 2008.

The easy to use Backup Exec interface walks users through the process of identifying the necessary Windows Server 2008 components for simple and easy backups and recoveries alongside of your existing possible installations of:

- Windows 2000
- Windows 2003
- VMware ESX
- Linux
- MAC OSX
- Solaris
- HP-UX
- NDMP NAS
- IBM AIX
- Novell NetWare systems.

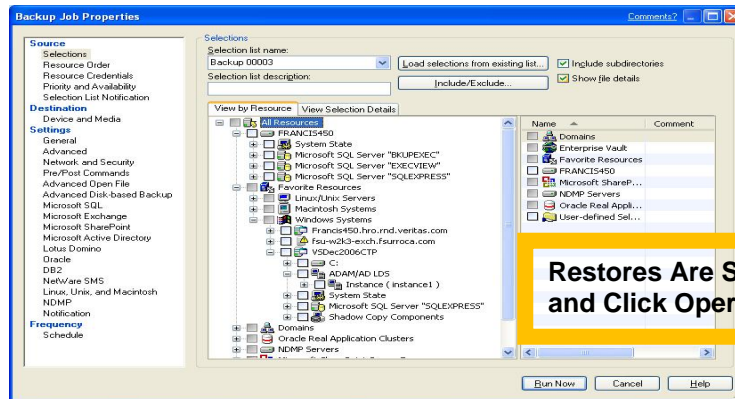
Platform Support

- Microsoft Windows Server 2008 Family (including 32-bit and x64 versions)
- Microsoft Windows Server 2003 Family (including 32-bit, x64, and R2 versions)
- Microsoft SBS 2003 Family (including R2)
- Microsoft Windows 2000 Server Family (SP4)

Backup Exec 12 for Windows Servers

Microsoft Windows Server 2008 Protection

Confidence in a connected world.  symantec.



FEATURES AND BENEFITS

Microsoft Server 2008-certified Support for Key Embedded Windows Server 2008 Technology	Included support for all key new Windows Server 2008 technologies including Server Core, VSS Writer Integration, System State, Active Directory, BitLocker, Cluster Failover, allows administrators to have complete confidence in their protection and planned recovery of Windows Server 2008 systems
Support for Windows 2000-2008	Save time, money, and administrative headaches of managing multiple backup solutions for multiple versions of Windows. Protect them all with Backup Exec 12
Continuous Protection Support	Backup Exec 12's included Continuous Protection Server technology allows for continuous protection of Windows Server 2008 data, including Server Core systems
Basic Automated Server Recovery	Allows Windows Server 2008 systems to be brought back from complete failure in an automated fashion directly from Backup Exec
Disk to Disk or Disk to Tape Backup and Recovery	Flexible backup and recovery capabilities allow for backup to disk for fast recovery and archiving to tape for long-term storage in a LAN, SAN, or WAN environment

BACKUP EXEC 12 WINDOWS 2008 LICENSING

Backup Exec 12 delivers complete data protection for a Windows Server 2008 environment running on a media server or on a remote server. Backup Exec 12 for Windows Servers is designed to accommodate the needs of Windows-based environments of all sizes— whether it's a single Windows Server or a large, multi-Domain Windows enterprise including multiple remote Linux and UNIX servers. The Backup Exec 12 Windows Server portfolio provides a wide array of high powered Agents and Options which are licensed on a per-Server or per-storage device for added scalability, supporting all Windows 2000, 2003 and 2008 environments, physical or virtual servers, and unlimited processors on the system.

Scenarios	Customer Environment	Licensing
Protecting 1 local Windows Server 2008 and 1 remote Windows Server 2008 on a LAN or WAN	Two Windows Server 2008 servers	Qty:1 of Backup Exec 12 for Windows Server license Qty:1 of Backup Exec 12 Agent for Windows Servers license

INTEGRATED DATA PROTECTION

Symantec Backup Exec 12 for Windows Servers can be expanded to protect additional remote systems and applications through the purchase additional Agents and Options which enable administrators to design and easily implement a comprehensive data and system protection solution for any Windows server environment. Other Backup Exec 12 agents & options include:

• Agent for SharePoint Server	• Agent for Exchange Server	• Central Admin Server Option
• Agent for SQL Server	• System Recovery Option	• Desktop and Laptop Option

FOR MORE INFORMATION

Symantec Enterprise Sales Support: 800-745-6054

Backup Exec on the Symantec Web Site : <http://www.symantec.com/backupexec/index.jsp>