

## COMPLETE WINDOWS SYSTEM RECOVERY IN MINUTES

A system recovery solution must be flexible, fast, and most of all, reliable. Most system recovery solutions today are based on technology designed for the 10+ year old Microsoft Windows NT 4.0 operating system and packaged as an add-on option to current tape based backup products. They simply automate the re-installation of a bare-bones version of Windows along with the backup applications “agent or client” to facilitate a remote restore from the backup application. In short, they are not designed to be a complete system recovery application that deals with the complexities of recovering an entire modern Windows server, desktop, or laptop system.

For example, they cannot deal effectively with these types of questions:

- How will I remotely recover a complete Windows server, desktop, or laptop without having to reinstall the OS, patches, service packs, and drivers in minutes?
- How can I recover a system to a completely different hardware platform with different RAID controllers, disk sub-system type, processor (core's, brands, count, etc)?
- Will I have to shut down my server, desktop, or laptop and its applications to take a system recovery image?
- If there is no physical replacement system to recover to what happens?
- How can I leverage virtualization platforms like VMware and Microsoft Hyper-V for disaster recovery?
- How can I recover virtual system images back to replacement physical hardware once physical replacement hardware is obtained?

When comparing system recovery solutions, many of these questions are often overlooked or neglected until the critical time of recovering an entire system is required. The ideal system recovery solution should have capabilities that minimize an administrator's time to recover a system. It should provide management of all phases of the system recovery, including installation, image creation scheduling, and monitoring of all backup and recovery operations, from a central console.

## Backup Exec System Recovery is *Different*

Backup Exec System Recovery (BESR) is the “*gold standard in complete Windows system recovery.*” It is unlike existing system recovery solutions that simply enable recovery from a traditional tape-based backup application by reinstalling Windows. Backup Exec System Recovery's disk-based image technology can take a complete “hot” image of a running Windows server, desktop, or laptop without shutting down Windows. The image contains a complete snapshot of the system including:

- All Operating System (OS) files including drivers, patches, Service Packs, Desktop shortcuts, Internet browser “Favorites/Bookmarks”, etc.
- All user data files
- All applications installed

With Backup Exec System Recovery's image-based technology, you can be sure you have an exact image of whatever you are protecting at the time of the backup to be used during a recovery. The Backup Exec System Recovery generated image can then be used to recover the entire system to:

- The original hardware
- Completely dissimilar hardware, including differences in RAID types, disk types, processor types, NIC cards, entirely different system manufacturers, etc.
- Virtual environments from Microsoft or VMware including, VMWare ESX, VMware Server, VMware Workstation, and Microsoft Hyper-V.

Backup Exec System Recovery (BESR) manages the entire recovery process, including booting of the inoperative system, locating and installing the necessary drivers for different hardware, and resizing the disk during recovery for growing or shrinking a recovered volume partition. For more information on the unique capabilities of Backup Exec System Recovery, please see [www.backupexec.com/besr](http://www.backupexec.com/besr).

## The Value of *Altiris Managed Backup Exec System Recovery*

As Backup Exec System Recovery becomes largely distributed in an organization's IT infrastructure, so does the need for ways to manage it. Leveraging the award-winning Altiris Notification Server's Configuration Management Database (CMDB) technology, the Backup Exec System Recovery Solution (BESR-S) delivers a highly scalable solution for complete Backup Exec System Recovery management via Altiris's Web

### Key Business Benefits

- Provides complete Windows Desktop/Laptop and Server “hot” image-based system recovery
- Recovers to completely dissimilar hardware, including differences in RAID types, disk types, processor types, NIC cards, entirely different system manufacturers, etc., using Restore Anywhere technology
- Recovers from one vendor's hardware platform to another or upgrades from older hardware to newer
- Recovers into virtualized environments, including VMware and Microsoft
- Allows for just block changes to be captured to save space and time using incremental image technology
- Manages Backup Exec System Recovery from the Altiris platform

### Platform Support

- Microsoft Windows Server 2008 Family (including , Core, 32-bit and x64 versions)
- Microsoft Windows Vista (including 32-bit and 64-bit)
- Microsoft Windows Server 2003 Family (including 32-bit, x64, and R2 versions)
- Microsoft Windows XP (including 32-bit and 64-bit)
- Microsoft SBS 2003/2008 Family
- Microsoft Windows 2000 Server Family (SP4)
- Altiris Management Server 7.0 Requires Microsoft Windows Server 2003 (32-bit)

# Backup Exec System Recovery Solution 8.5

## System Recovery Management Powered by Altiris



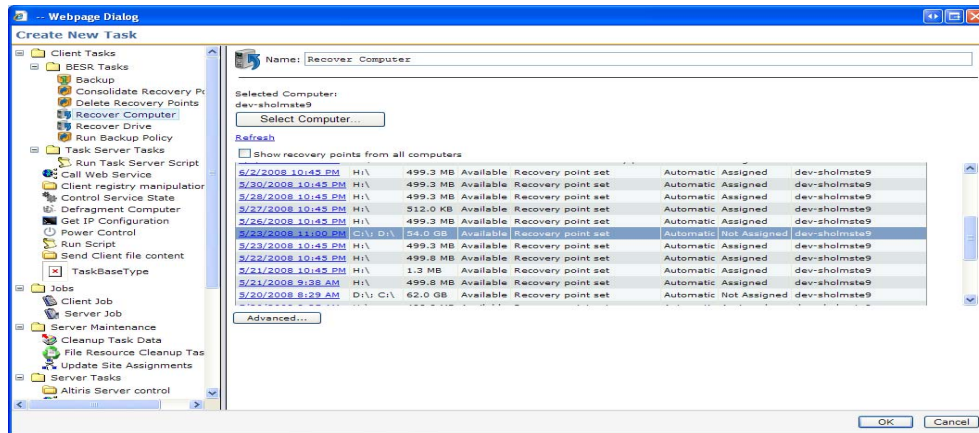
browser-based Management Console. BESR-S allows for the management of large numbers of remote Backup Exec System Recovery Server, Desktop, and Small Business Server. The benefits of Altiris are already utilized by many Backup Exec customers today who use Altiris to manage thousands of systems and their applications worldwide. Additional information on Altiris CMDB technology is available at the following link: <http://www.altiris.com/Products/AssetCMDB.aspx>.

### How Backup Exec System Recovery Solution Works

BESR-S was created to help organizations reduce the Total Cost of Ownership (TCO) of Backup Exec System Recovery via the Altiris platform. It was designed to reduce the time involved in remotely recovering entire Windows servers, desktops, and laptops in large organizations from a central location. BESR-S is built on the Altiris Notification Server 7.0 platform, which provides active management of servers and desktop operations via other Altiris Server and Client Management Solutions.

After configuring a BESR-S installation, almost all Backup Exec System Recovery operations can be centrally managed including;

- Deployments of Backup Exec System Recovery
- Backup operations and scheduling
- Recovery operations of entire systems or individual volumes of remote systems
- Monitoring and reporting



### FEATURES AND BENEFITS

<b>Complete Remote System Recovery</b>	Eliminate downtime with image-based recovery of Windows servers, desktops, and laptops
<b>Dissimilar Hardware Restore</b>	Recover entire systems quickly without worry about hardware and driver differences
<b>Integrated with Altiris</b>	Integrate Backup Exec System Recovery management alongside existing Altiris solutions

### BACKUP EXEC SYSTEM RECOVERY SOLUTION LICENSING

Backup Exec System Recovery Solution is licensed on a **per system** basis based on the operating system to be protected, either Windows Server OS (Server 2000-2008), Windows Desktop OS (XP or Vista), or Windows Small Business Server (MS SBS) OS. A single license of the Backup Exec System Recovery Solution includes both the client **and** management components. There is no additional management license to purchase regardless of the number of BESR clients deployed and managed.

Scenarios	Customer Environment	Licensing
Protecting three (3) Windows Server 2003 systems	Three (3) Windows Server 2003 x64 systems	Qty: Three (3) Backup Exec System Recovery Solution (BESR-S) <b>Server</b> licenses
Protecting ten (10) Windows XP systems	Ten (10) Windows XP systems	Qty: Ten (10) Backup Exec System Recovery Solution (BESR-S) <b>Desktop</b> licenses

### FOR MORE INFORMATION

Symantec Enterprise Sales Support: 800-745-6054 and [http://www.symantec.com/business/contact\\_sales.jsp](http://www.symantec.com/business/contact_sales.jsp)  
 Backup Exec on the Symantec Web Site: <http://www.symantec.com/backupexec/index.jsp>