

## MICROSOFT EXCHANGE DATA PROTECTION

Companies today are facing the ever-increasing challenge of managing the explosive growth of valuable data. The predominant form of communication for business transactions is email, which makes Exchange an application that is mission critical to organizations of all sizes. Microsoft Exchange generates a huge amount of information that must be immediately available and protected. The loss of a single message may generate hours of unnecessary and frustrating labor for administrators and can lower productivity or even hinder progress within organizations.

Ensuring the content within Exchange is safely protected is paramount to a company's success. The loss of this data, even momentarily, causes delays in effective communications both internally and externally – leading to losses in productivity and revenues. Today's information and technology administrators need a reliable, easy to use and efficient backup and recovery solution to protect their intellectual property.

## IMPROVING EXCHANGE APPLICATION AVAILABILITY

The objective of traditional backups is to minimize downtime for the enterprise messaging environment while providing the quickest possible data recovery in the event of a system crash, database corruption, loss of a single mailbox, or some other form of data loss. In order to maintain the availability of Exchange and protect its mission-critical data stores, companies go to great lengths to protect their Exchange environments. Today, this protection is primarily accomplished through online backups of the Exchange databases. If organizations also need to recover individual email messages or mailboxes, a separate, slow, error-prone, "brick-level" mailbox backup is typically required to recover these individual items without restoring the entire Exchange database. Today the Backup Exec Agent for Exchange is the only solution to eliminate this time consuming Exchange mailbox backups by leveraging the innovative Granular Recovery Technology (GRT) inherent in Backup Exec 12.5 which helps IT Administrators save time and money by providing the ability to restore individual Exchange items including:

- Mailboxes
- Public/private folder items
- Down to individual message, contact, calendar item, journal entry, task item, etc

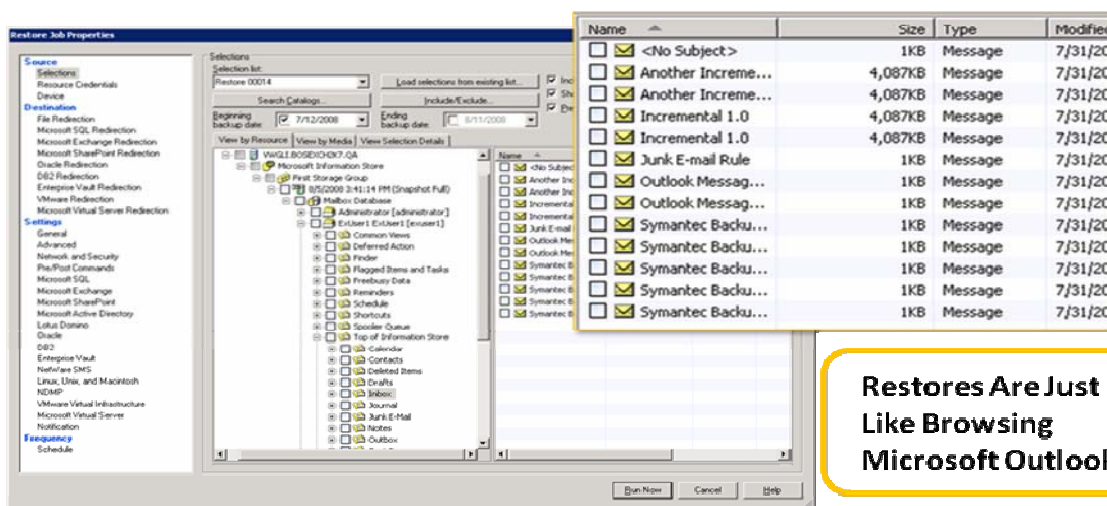
*from a single-pass database level backup.* GRT completely eliminates the need to do slow, error-prone, and media intensive separate "brick-level" mailbox backups. GRT allows IT Administrators to restore the individual item to the original location in the Exchange server or redirect restore of items to an alternate Exchange server or mailbox.

### Key Business Benefits

- Helps safeguard critical Microsoft Exchange 2000-2007 Servers with the same Agent
- Recovers individual email messages, mailboxes, and public and private folders from single-pass database backups—without separate "brick-level" individual mailbox backups—in seconds
- Eliminate daily backup windows for Exchange with Continuous Protection
- Intuitive and easy-to-use interface makes backing up Exchange resources painless

### Platform Support

- Microsoft Exchange Server 2007 (can be protected from 32bit or 64bit versions of Backup Exec 12.5)
- Microsoft Exchange Server 2003
- Microsoft Exchange Server 2000



**Restores Are Just Like Browsing Microsoft Outlook**

The Backup Exec Agent for Exchange has protection for Exchange 2007, including full VSS snapshot support and built-in support for Local Cluster Replication (LCR) and Continuous Cluster Replication (CCR) Exchange 2007 environments.

Included Continuous Protection of Exchange feature eliminates traditional backup windows by continuously protecting Exchange allowing users to perform weekly, instead of daily, full backups of Exchange. Continuous Protection of Exchange enables email continuity allowing recovery of an Exchange Storage Group or individual mailbox database to a specific time, even just 15 minutes ago including ability to recover critical individual Exchange documents such as emails, folders, or mailboxes, in just seconds through the use of GRT.

### FEATURES AND BENEFITS

|   |  |
|---|--|
| <b>Embedded Granular Recovery Technology</b>            | Included GRT technology provides ability to restore individual Exchange items from a single full backup or off-host snapshot of the Exchange 2000-2007 databases which saves valuable time when restoring a single email message, mailbox, or public/private folder item   |
| <b>Single-Pass Backup with GRT</b>                      | Eliminates separate slow “brick-level” individual mailbox backups forever. Complete protection requires only one backup pass—saving space on vital disk and/or tape media and ensuring your backups complete quickly. Restore entire Exchange Storage Group, individual mailbox database, or individual mailbox items all from single-pass backup                |
| <b>Complete 32 or 64 bit Support</b>                    | Supports any combination of 32bit and 64bit Windows operating systems for the Backup Exec and Exchange Server to allow maximum flexibility   |
| <b>Redirect Restoration</b>                             | Restore Exchange individual items and databases to alternate servers and mailboxes in the event of a complete server failure or loss of individual item  |
| <b>Disk to Disk or Disk to Tape Backup and Recovery</b> | Flexible backup and recovery capabilities allow for backup to disk for fast recovery and archiving to tape for long-term storage   |
| <b>Easy to use, integrated data protection</b>          | An integrated backup strategy for Exchange data as part of overall scheduled backup routines of all company data   |
| <b>Continuous Protection</b>                            | Continuous Protection enables Backup Exec to continuously protect Exchange data to disk without worrying about nightly backup windows. The Continuous Protection of Exchange creates GRT-enabled “recovery points” of Exchange at intervals that you specify which allows recovery of individual emails, public/private folders, or entire mailboxes in seconds. |

### EXCHANGE DEPLOYMENT & BACKUP EXEC LICENSING

The Agent for Exchange is designed to accommodate the needs of large and small deployments of Exchange – whether it’s a single server with Windows Exchange Server or a robust, multi-server Exchange environment. The Agent for Exchange is licensed per Exchange server. The easy to use Backup Exec interface walks users through the process of identifying the necessary Exchange components and adds the components to the selection list within the Backup Exec interface.

Based on the complexity of your configuration, additional Backup Exec licenses may be required as described below.

| Scenarios                             | Customer Environment                          | Licensing   |
|---------------------------------------|---|---|
| Protecting Exchange 2000-2007 Servers | Single server running Exchange 2000/2003/2007 | Qty:1 of Backup Exec Exchange Agent (Licensed per Exchange Server)<br>*Note-Clustered Exchange Servers only require the purchase of a single Exchange Agent license allowing for the same agent to be installed on the multiple Exchange clustered-nodes. |

### INTEGRATED DATA PROTECTION

Symantec Backup Exec 12.5 Agent for Exchange is one of several agents and options which enable administrators to design and easily implement a comprehensive data and system protection solution for any Windows server environment. They work together to provide system-wide protection and recoverability. Other Backup Exec 12.5 agents & options include:

|                               |                              |                               |
|-------------------------------|------------------------------|-------------------------------|
| • Agent for SharePoint Server | • Agent for Active Directory | • Central Admin Server Option |
| • Agent for SQL Server        | • Agent for Enterprise Vault | • Desktop and Laptop Option   |

### FOR MORE INFORMATION

Symantec Enterprise Sales Support : 800-745-6054

Backup Exec on the Symantec Web Site : <http://www.backupexec.com>