

# Symantec Enterprise Vault™ Discovery Accelerator 6.0

---

## **Simplify e-discovery for proactive response**

Symantec Enterprise Vault™ Discovery Accelerator 6.0 extends the basic search functionality of Enterprise Vault email and file archiving to help lower the cost of data collection and facilitate the search and recovery process of archived items used for electronic discovery. The release of Discovery Accelerator 6.0 provides significant enhancements delivering a more powerful and efficient search capability, configurable enforcement of items during litigation holds and flexible export capabilities to simplify production.

---

## **Key Highlights**

### ***Instantly Search Across Enterprise Vault Archives***

- Potential to target all internal and/or external data including email, files, attachments and IM
- Boolean fields – Search metadata, and full attachments including more than 285 file types
- De-duplicate redundant items in subsequent searches
- Create and leverage multiple Discovery Accelerator databases for scalability, security and segregation of data between authorized individuals or groups (e.g. Legal, HR)

### ***Intuitive Event-Driven Workflow and Review***

- Hierarchical initial review by authorized reviewers/investigators
- Define and assign cases management/review

- Review and “Mark” items using customizable tags (e.g., privileged, non-responsive)
- Apply legal holds for pending / open litigation to suspend deletion

## ***Produce and Export On Demand***

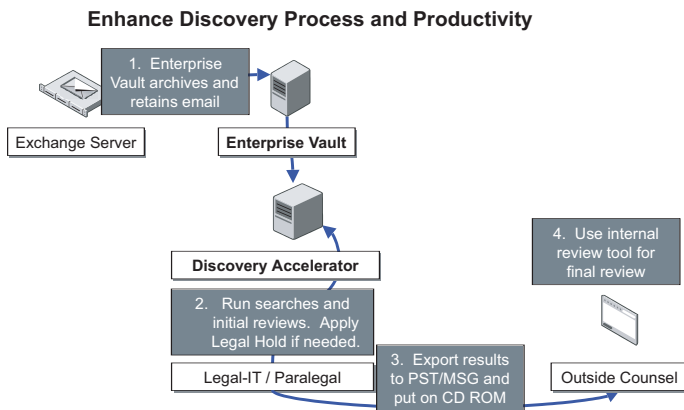
- Export to native file system and message formats (including MSG, NFS, HTML and PST)
  - Full audit trail to illustrate due diligence
- 

## ***Secure, hierarchical web-based search and production***

Discovery Accelerator 6.0 allows authorized reviewers (e.g. corporate litigation, HR, external counsel) to quickly target and pinpoint specific email/files when it's needed as part of litigation support, legal discovery or investigation. With no IT dependencies for locating email from backup, Enterprise Vault Discovery Accelerator provides a high level of organization and structure to your messaging system and enables content to be quickly tracked, reviewed and marked for either lead counsel examination or court-ready production. This greatly reduces the cost of electronic discovery because relevant email can be easily searched, qualified and rapidly brought to the surface. Built with scalability in mind to help search across petabytes of archived data, Discovery Accelerator is easily administered by IT and enables multiple databases to be created to optimize performance and secure the segregation of data between authorized individuals or groups as needed.

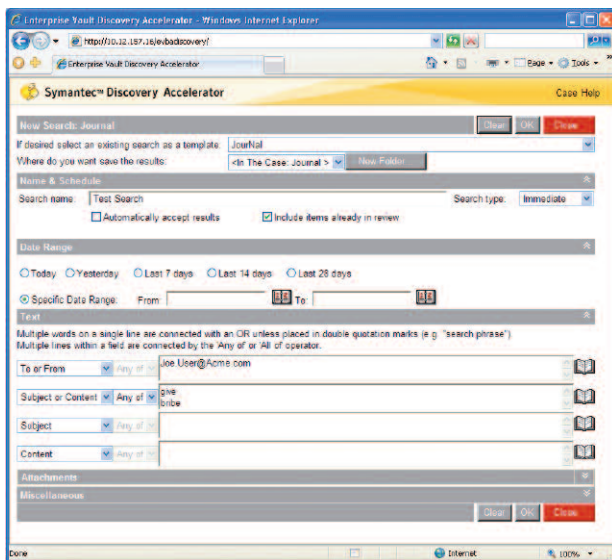


## Data Sheet: Data and System Protection Symantec Enterprise Vault™ Discovery Accelerator 6.0



**Enterprise Vault enforces automatic capture and retention of email and files. Discovery Accelerator offers additional capabilities to run fast initial search, review and export to simplify the E-Discovery process.**

### Flexible and efficient search options for attorneys and HR



**Discovery Accelerator provides flexible search options, scheduled searches and Ad Hoc investigative search folders**

Attorneys, HR and other authorized personnel can leverage Discovery Accelerator to run enterprise-wide searches across archived content on a case by case basis. Searches can be executed based on multiple criteria including constituents, date range and message/file content utilizing Boolean fields and attachment types to shape results. All searches can be scheduled and Ad Hoc investigative search folders can be used to organize items associated within case searches. This gives the organization options, secured by rights, to run preliminary and test searches; isolate proprietary content from case audit trails or export selected item-sets for outside counsel review.

### Initial review and marking of items

Items can be reviewed in Discovery Accelerator. Multiple reviewers can be assigned the task of reviewing content generated by the initial search. The reviewers can then 'mark' items as being relevant to the search in hand or not relevant. The marks themselves can be permanently assigned to a message. This means that if a privileged message was to appear in another review process it can be pre-sorted.

### Apply legal hold of archived content

Automatically apply legal holds against email/files relevant to a case or multiple cases to ensure preservation so they will not be deleted. Additionally, the system will automatically run scheduled searches to add any new content to the hold. Once the case is closed, users can quickly release all holds on a case by case basis and allow the documents to revert back to originally scheduled deletion dates.

---

### Flexible export and production

Discovery Accelerator automates the production of the relevant items, ready for disclosure to the body demanding the information. Through the flexible options within Discovery Accelerator you can produce all items in their native original file format including Microsoft Exchange MSG and Lotus Domino/Notes NFS message formats without having to open the original application.

### Product requirements

#### **Discovery Accelerator requires:**

- Symantec Enterprise Vault 6.0 SP2 or later with basic configurable options for capturing targeted content (e.g. Microsoft Exchange or Lotus Domino Journaling)
- Dedicated Windows Server 2003 or Windows 2000 Server SP1 or later
- Dual Processor 2Ghz Xeon or better
- 2-4GB RAM
- Microsoft Internet Explorer 5.5 or later

**Enterprise Vault allows customers to leverage existing storage platforms or implement more cost effective storage specifically designed for archiving and long term data retention. Storage options include:**

- Direct Attached Storage
- SAN, NAS
- WORM devices and Content Addressable Storage (CAS)
- DVD / Optical / Tape (via NetBackup)

For complete list of requirements and supported hardware/software please visit [www.symantec.com](http://www.symantec.com).

**More information**

*Visit our Web site*

[www.symantec.com/enterprisevault](http://www.symantec.com/enterprisevault)

*To speak to a Data and System Protection specialist in the U.S.*

Call toll free 800-745-6054 for more information about Symantec Enterprise Vault Discovery Accelerator.

*To speak to an Data and System Protection specialist outside the U.S.*

Symantec has operations in more than 40 countries. For specific country offices and contact numbers, visit our Web site.

*About Symantec*

Symantec is the global leader in information security providing a broad range of software, appliances and services designed to help individuals, small and mid-sized businesses, and large enterprises secure and manage their IT infrastructure. Symantec's Norton brand of products is the worldwide leader in consumer security and problem-solving solutions. Headquartered in Cupertino, Calif., Symantec has operations in more than 40 countries. More information is available at [www.symantec.com](http://www.symantec.com).

*Symantec Corporation World Headquarters*

20330 Stevens Creek Boulevard

Cupertino, CA 95014 USA

408 517 8000

800 721 3934

[www.symantec.com](http://www.symantec.com)

