

AUTOMATED FILE PROTECTION FOR DESKTOPS AND LAPTOPS

KEY BENEFITS

- Provides continuous disk-based protection for desktops and laptops
- Reduces total cost of ownership
- Synchronizes files between multiple machines
- Integrates with NetBackup for a complete solution

Challenges in Protecting User Data

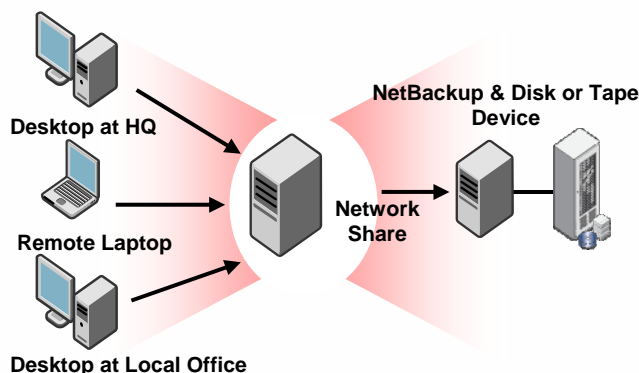
Today's IT managers face a daunting challenge when it comes to protecting data. Not only is data growing at unprecedented rates, but it is also growing increasingly mobile. More and more organizations are equipping sales teams, traveling executives and mobile offices with laptops and remote desktops.

In fact, analysts estimate that now over 70% of a company's data resides outside managed servers on individual desktops and laptops. While the data on these machines may be some of the most critical and difficult to replace throughout the company, they are typically the least protected.

Most solutions that offer to protect desktop and laptop data are expensive and cumbersome. As a result, many organizations have resorted to ineffective, ad-hoc solutions to protect this data. The most common approach has been to create network shares and have users to manually copy their data onto these shares. However, this approach has been futile. Users simply cannot be relied upon to routinely back up their data.

NetBackup Desktop and Laptop Option

The NetBackup Desktop Laptop Option is a network share based protection and synchronization solution that enhances current IT desktop and laptop protection policies using existing IT infrastructure.



PRODUCT HIGHLIGHTS

- **Continuous Data Protection:** Backup files continuously, on a schedule, or manually.
- **NEW! Delta File Transfer:** Backup only changed file segments
- **NEW! Active Directory Integration:** Configure connection policies and user assignments with Active Directory.
- **Offline Backup/Restore:** When users are offline, DLO will backup files to a local folder accessible to users for restore. Once connection is restored, data will be moved from local file to the network share.
- **Automated File Protection:** DLO automates the copying of user files to a network share.
- **User Restore:** Users can restore files quickly and easily, online or offline, without IT assistance.
- **Synchronization of Files:** Users can access data wherever and whenever they need it.
- **Flexible:** Administrators can customize DLO to select what files to backup, when to back them up, where data is stored and how much bandwidth to use.
- **Email Message Level Protection** – Protects local Outlook files (PSTs) and **(NEW)** IBM Lotus mailboxes and databases (NSFs).
- **NEW! Connection Based Policies:** Control backup activity based on network connections.
- **Bandwidth Throttling and Application Yielding:** Configure bandwidth usage and resource utilization to meet your needs.

Since many organizations already have sufficient infrastructure in place to protect user data, they are reluctant to invest in costly, stand-alone solutions that require additional storage, dedicated servers, and large databases. Administrators need a practical, reliable solution that will help them protect user data while keeping cost and complexity to a minimum. The NetBackup Desktop and Laptop Option provides an answer to this problem by leveraging existing infrastructure.

AUTOMATED FILE PROTECTION FOR DESKTOPS AND LAPTOPS

Continuous Data Protection

Desktop Laptop Option provides continuous disk-based protection for users whether they are in the office or on the road. Protection is provided whether the computer is online or offline. When the computer is not connected to the network, files created by the user are backed up to a local file. Once network connectivity is restored, the files are then backed up from the local file to the designated network share. As a result, users can work and travel knowing their data is safe

Reduces Total Cost of Ownership

By automating the process of copying user data onto a network share, Desktop Laptop Option easily fits into the existing infrastructure and policies companies have in place. This reduces total cost of ownership by maximizing utilization of current resources. In addition, the unique design of Desktop Laptop Option eliminates the need for a dedicated server and allows a company to adopt a solution without having to invest in additional hardware, personnel, and storage.

Synchronization

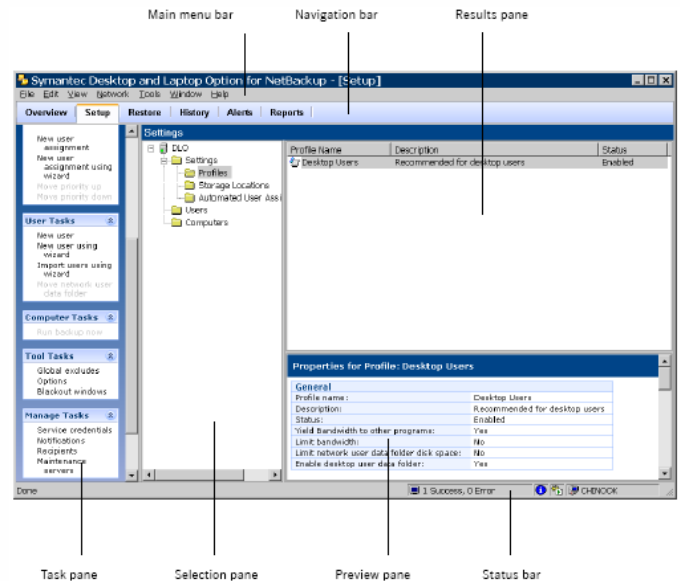
With synchronization, users can access their data from multiple computers at multiple locations. For example, an executive working on a PowerPoint at a desktop in the office, can access the latest version of that file from her laptop, whether she is at home, on the road, or visiting a client. Users can access their latest files wherever and whenever they need them.

Comprehensive Solution

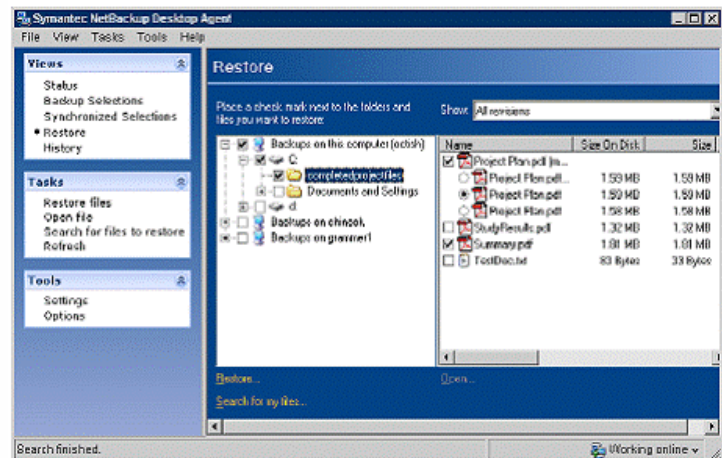
The Desktop Laptop Option extends data protection beyond the main office out to individual desktops and laptops. With the Desktop Laptop Option and NetBackup, users can rely on one source for a comprehensive data protection solution.

Summary

As data becomes increasingly mobile, IT managers have struggled to find an effective solution to protect critical user data. The Desktop Laptop Option helps administrators ensure protection of user data by automatically copying the data over to designated network shares. By using network shares, this new Option leverages existing infrastructure most organizations already have in place. This maximizes current resource utilization while minimizing cost and complexity.



An intuitive, easy-to-use console enables administrators to customize backup to fit their specific environment.



Users can easily find and restore their own data which saves time for both users and IT administrators.

Administrators can determine the amount of interaction each individual or group of users can have with the Desktop Laptop Option

VERITAS Software Corporation

350 Ellis Street
Mountain View, CA 94043
650-527-8000 or 866-837-4827
www.veritas.com